

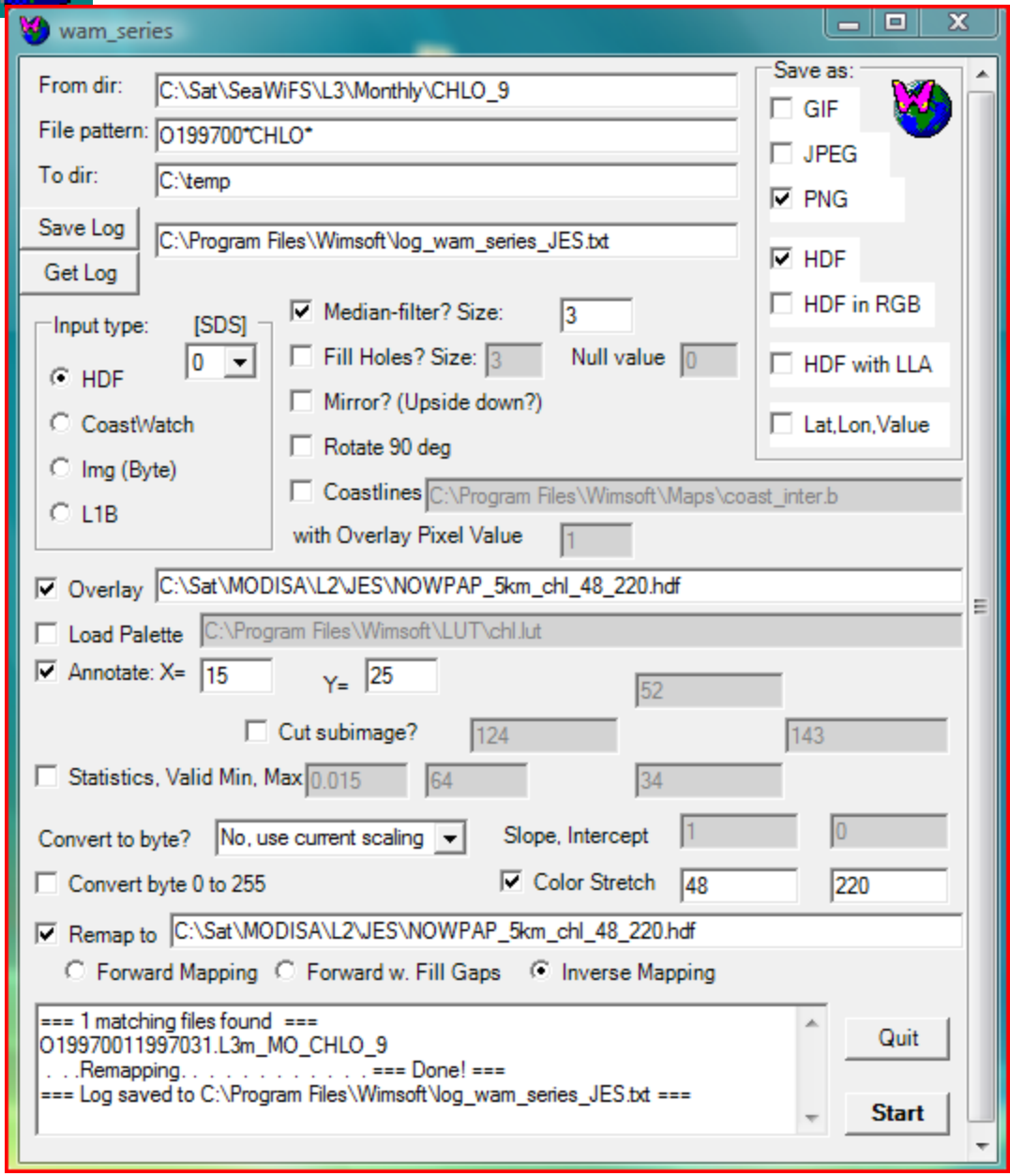


# Exercises with L3 time series movie

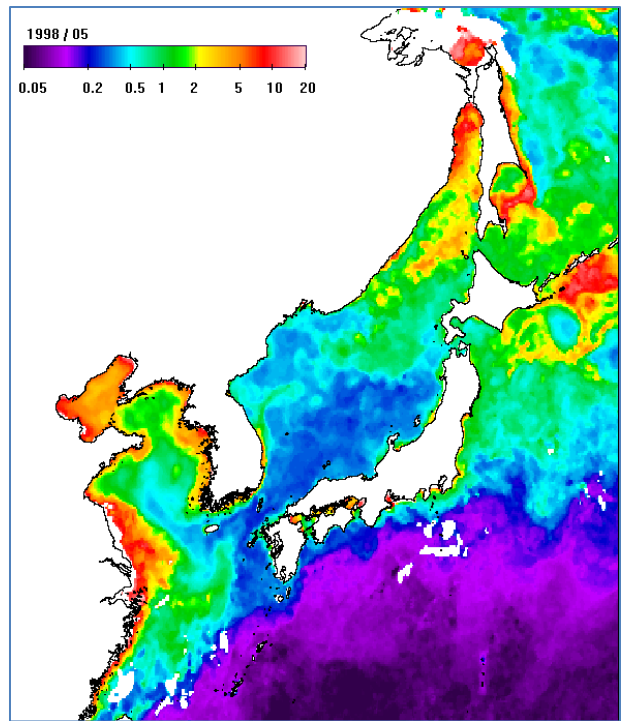
## Using *wam\_series*

1. First test the default options with the matching images in *Images\SeaWiFS\L3\Monthly folder!*
2. Cut out a your area of interest, experiment!
3. Apply to multiple L3 datasets in *C:\Sat\SeaWiFS\L3\Monthly\CHL\_9*
  - Test with a few images! Don't run a test with ALL images at once as that will take a long time and you cannot stop the processing!
  - Experiment! To create better-looking images you can use *Median-Filter-3*, previously generated **overlays**, **remapping** to another projection, **annotating** with date, etc. While testing, save both as HDF and as PNG.





A good option is to make images of JES using the **C:\Sat\MODISA\L2\JES\NOWPAP\_5km\_chl\_48\_220.hdf** as both overlay and target map.





# Exercises with L3 time series

## Making movie loops (animated GIFs)

- Create a series of JPEGs or PNGs of your area of interest
- Install *Babarosa GIF Animator* (run *babarosa.exe* in the **Tools** folder on the DVD)

- Create an animated GIF with *Babarosa GIF Animator*, save as *Animated GIF*.

